



Student worksheet

Gulag

The Gulag archipelago



Exercises:

1. Which links can you find between prison camps and the regional location of heavy industry of the Soviet Union? Please explain.
2. What kind of historical events influenced the change in the number of prisoners? See statistics of prisoners.
3. Which year marked the highest mortality rate of the prisoners? What could be the reason for that?
4. Which years marked the highest release rate of the prisoners? What could be the reason for that?
5. Discuss, what kind of conclusion can be made on the statistics of prisoners and camps?



B Industry and mining areas in the SSSR



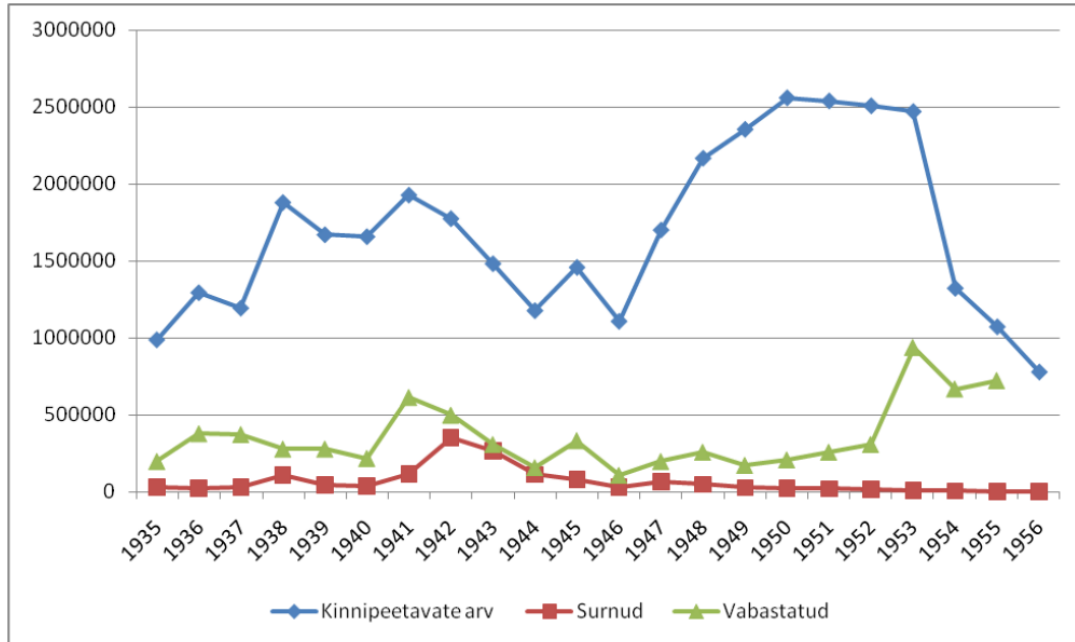
- metsatööstus- ja kaevanduspiirkonnad – forestry and mining areas
- kanaliehitus – canal construction
- suuremad tööstuspiirkonnad – large areas of industry
- raudtee-ehitus – railroad construction

Exercises:

1. Which links can you find between prison camps and the regional location of heavy industry of the Soviet Union? Please explain.
2. What kind of historical events influenced the change in the number of prisoners? See statistics of prisoners.
3. Which year marked the highest mortality rate of the prisoners? What could be the reason for that?
4. Which years marked the highest release rate of the prisoners? What could be the reason for that?
5. Discuss, what kind of conclusion can be made on the statistics of prisoners and camps?



C Statistics on the Gulag prisoners in 1935–1956 (in millions)



- Kinnipeetavate arv – number of detainees
- Surnud – deceased
- Vabastatud – liberated

Exercises:

1. Which links can you find between prison camps and the regional location of heavy industry of the Soviet Union? Please explain.
2. What kind of historical events influenced the change in the number of prisoners? See statistics of prisoners.
3. Which year marked the highest mortality rate of the prisoners? What could be the reason for that?
4. Which years marked the highest release rate of the prisoners? What could be the reason for that?
5. Discuss, what kind of conclusion can be made on the statistics of prisoners and camps?

Source D: Number of Internees and Death Rate in Labour-Prison Camps and Colonies

Year	Number of internees as of 1	Deaths during the year
------	-----------------------------	------------------------



	January	
1935	990 554	31 636
1936	1 296 494	24 993
1937	1 196 369	31 056
1938	1 881 570	108 654
1939	1 672 438	44 750
1940	1 659 992	41 343
1941	1 929 729	117 068
1942	1 777 043	352 560
1943	1 484 182	267 826
1944	1 179 819	114 481
1945	1 460 677	81 917
1946	1 110 593	30 715
1947	1 703 506	66 830
1948	2 169 252	50 659
1949	2 356 685	29 350
1950	2 561 351	24 511
1951	2 540 760	22 496
1952	2 509 788	18 762
1953	2 472 247	9628 (not including special camps)
1954	1 325 003	8 358
1955	1 075 280	4 842
1956	781 630	3 164

See also the graph *Statistics of Gulag Prisoners in 1935-1956*, pg. 94.

A total of 476 labour-prison camp complexes operated in the Soviet Union in 1929–1953 along with tens of thousands of camp sections and camp stations. It is not known how many prisoners passed through the camp system. It is estimated that a total of up to 20 million people passed through Gulag prison camps. The table presents the numbers of persons interned in prison camps by year, which does not take significant turnover into account. For instance, 1 490 959 prisoners were added to the camps in 1947 while at the same time 1 012 967 prisoners left the camps. The statistics also do not reflect the prisoners sent to the Red Army during the war nor the fact that nearly a quarter of prisoners died in 1942–1943.

**Exercises:**

1. Which links can you find between prison camps and the regional location of heavy industry of the Soviet Union? Please explain.
2. What kind of historical events influenced the change in the number of prisoners? See statistics of prisoners.
3. Which year marked the highest mortality rate of the prisoners? What could be the reason for that?
4. Which years marked the highest release rate of the prisoners? What could be the reason for that?
5. Discuss, what kind of conclusion can be made on the statistics of prisoners and camps?